

LAGBOI 2200 / 3000

Cable drum rack and unwinding system

Strong helper with various equipping possibilities



Fig. 1 LAGBOI 2200 M

LAGBOI 2200 / 3000

- Cable drum rack and unwinding system in stationary or mobile version

Functionality:

The **LAGBOI** consists of pre-assembled modules (frame and crossbars) and can be assembled to a solid, clearly ordered, space-saving and very useful rack and unwinding device. The system is only suitable for **manual unwinding**.

- Variable equipping possibilities
- High stability
- High surface protection (powder coated)
- Available in stationary or mobile version
- Travelling equipment / drawbar includes a gas pressure spring (compensated weight)

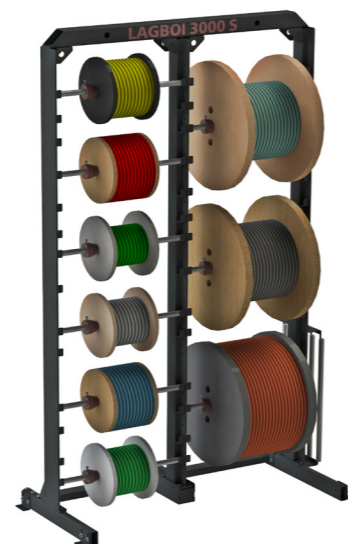


Fig. 2 LAGBOI 3000 S

LAGBOI 2200 / 3000

Cable drum rack and unwinding system

Basic frame

Technical data	LAGBOI 3000 S	LAGBOI 2200 S	LAGBOI 3000 M	LAGBOI 2200 M
Part No.	85100934	85100935	85100936	85100937
H x W x D	3080 x 1880 x 980 mm	2170 x 1880 x 980 mm	3110 x 940 x 1430 mm	2200 x 1940 x 1430 mm
Loading capacity	max. 3000 kg	max. 3000 kg	max. 2200 kg	max. 2200 kg
Weight	approx. 250 kg	approx. 200 kg	approx. 280 kg	approx. 230 kg
Colour	RAL 7005 mouse grey	RAL 7005 mouse grey	RAL 7005 mouse grey	RAL 7005 mouse grey
Travelling equipment with drawbar and 4 heavy-duty-wheels	X	X	✓	✓

Equipping possibilities depending on drum sizes (KTG design DIN 46391)

Equipping possibility depending on drum size	12 x Ø 400 mm drums 2 x 6 axles	8 x Ø 300 mm drums 2 x 4 axles	12 x Ø 400 mm drums 2 x 6 axles	8 x Ø 300 mm drums 2 x 4 axles
or	8 x Ø 600 mm drums 2 x 4 axles	6 x Ø 600 mm drums 2 x 3 axles	8 x Ø 600 mm drums 2 x 4 axles	6 x Ø 600 mm drums 2 x 3 axles
or	6 x Ø 800 mm drums 2 x 3 axles	4 x Ø 900 mm drums 2 x 2 axles	6 x Ø 800 mm drums 2 x 3 axles	4 x Ø 900 mm drums 2 x 2 axles
or	4 x Ø 1000 mm drums 2 x 2 axles		4 x Ø 1000 mm drums 2 x 2 axles	

Drum axle

Part No.	Description
85008010	Drum axle Ø 34 x 840 mm incl. centering cones with clamping screws

Recommended accessory:

- **TROMSTOP transport and loading accessory** to transport, store and remove cable drums in and out of a cable drum rack



Fig. 3 Drum axle incl. centering cones

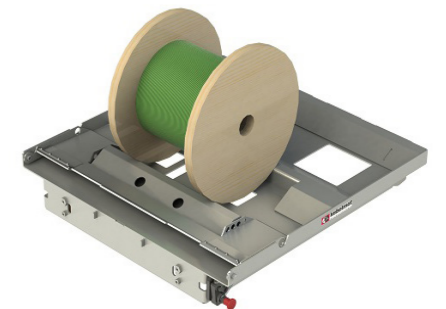


Fig. 4 TROMSTOP transport and loading accessory

Note: The device LAGBOI has to be assembled on site in accordance with the delivered manual. The assembly is not included in the supply.

Indoor use only. Fig. may differ from the original. Technical modifications reserved. Status: 01/2020