

MESSROL 450

Coil and spool rewinder, manual

Rewind coils and spools while simultaneously measuring



Fig. 1 MESSROL 450 complete device with RAPID 450 SP, RINGFIX 480 and MESSBOI 10

MESSROL 450

- Coil and spool rewinder for small coils and spools

Functionality:

This manual coil and spool rewinder enables to wind winding material like cables, wires etc. from coils or spools into smaller coils or onto smaller spools while at the same time the material is measured exactly.

- Flexible modular system
- Easy winding while simultaneously measuring
- Twisting-free winding of the winding material
- Adjustable break mechanism at the base frame avoid an uncontrolled material flow
- Easy assembly and removal of the coils and spools
- Continuous and central tension of the coils

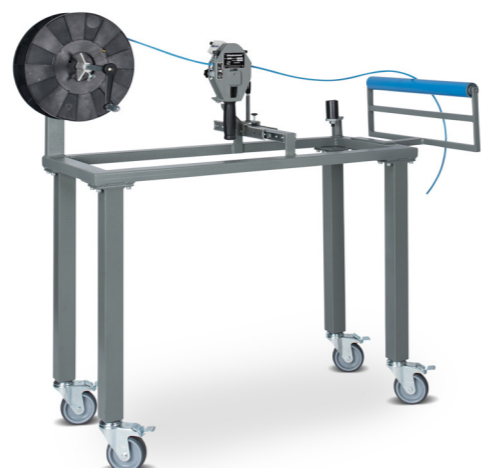


Fig. 2 MESSROL 450 with spool winding axle, MESSBOI 30 and inlet roller

MESSROL 450

Coil and spool rewinder, manual

Complete device

Complete device	MESSROL 450 complete device
Part No.	86001121
consisting of:	
Frame	85100436
Mobile	85100437
RINGFIX 480	85101211
RAPID 450 SP	85100090
MESSBOI 10	85100471
Technical device	
L x W x H	approx. 1000 x 400 x 1200 mm
Colour	RAL 7005 mouse grey
Weight	approx. 48 kg

Frame

Technical data	MESSROL 450 basic frame / desk frame
Part No.	85100436
Coiler head holder	Ø 20 mm
L x W x H	approx. 1000 x 400 x 350 mm
Coil Weight	max. 25 kg
Colour	RAL 7005 mouse grey
Weight	approx. 14,5 kg

Pillars with rollers for basic frame

Technical data	MESSROL 450 mobile
Part No.	85100437
Steering rollers (4 pcs. set)	brakeable
Colour	RAL 7005 mouse grey
Material	steel
Weight (Set)	12 kg
Length	approx. 750 mm
Scope: 4 pillars with brakeable steering rollers	

Inlet roller for unwinding from cable drums

Technical data	MESSROL 450 inlet roller
Part No.	85100438
Inlet roller	Ø 50 mm
Colour	RAL 7005 mouse grey
Material	steel
Weight	approx. 3,4 kg



Fig. 3: MESSROL 450 complete device

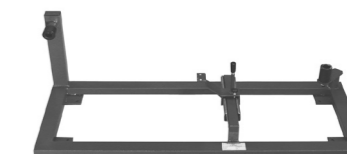


Fig. 4: MESSROL 450 basic frame



Fig. 5: MESSROL 450 pillar mobile

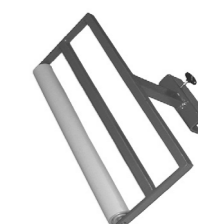


Fig. 6: MESSROL 450 inlet roller

MESSROL 450

Coil and spool rewriter, manual

Coiler head

Technical data	RAPID 400 SP	RAPID 450 SP
Part No.	85100089	85100090
Coil Ø	max. 400 mm	max. 450 mm
Winding width	max. 70 mm	max. 70 mm
Core Ø	130 mm	250 mm
Axle Ø	20 mm	20 mm
Coil Weight	max. 15 kg	max. 15 kg
Colour	galvanised	galvanised
Material	steel	steel
Weight	approx. 4,0 kg	approx. 4,5 kg

Spool winding axle

Technical data	Spool winding axle
Part No.	86118100
Spool Ø	max. 310 mm
Spool width	max. 220 mm
Spool bore	25 - 80 mm
Spool weight	max. 10 kg
Axle holder	20 mm
Axle	Ø 16 mm x 270 mm
Colour	RAL 7035 light grey

Coil unwinding plate

Technical data	RINGFIX 480
Part No.	85101509
Coil Ø	max. 470 mm
Plate Ø	480 mm
Height core bolts	250 mm
Core adjusting range	140 - 320 mm
Coil weight	max. 20 kg
Colour	galvanised
Weight	approx. 15 kg

Spool unwinding plate

Technical data	SPULFIX 480
Part No.	85101516
Spool Ø	max. 470 mm
Spool width	max. 150 mm
Plate Ø	480 mm
Core bolt dimensions	Ø 16 x 200 mm
Centering cone for bore Ø	25 - 80 mm
Spool weight	max. 25 kg
Colour	galvanised
Weight	approx. 5,7 kg



Fig. 7: RAPID 400 SP



Fig. 8: Spool winding axle



Fig. 9: RINGFIX 480

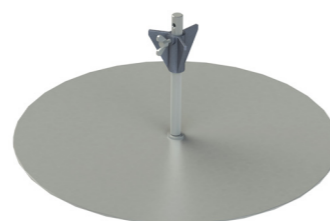


Fig. 10: SPULFIX 480

MESSROL 450

Coil and spool rewriter, manual

Length measuring device

Technical data	MESSBOI 10	MESSBOI 10 (MID)*
Part No.	85100471	86100471
Winding good Ø	1-15 mm	1-10 mm
L x W x H	approx. 160 x 110 x 85 mm	approx. 160 x 110 x 85 mm
Counter with reset key	9999,99 m	9999,99 m
Measuring accuracy	+/- 2 %	+/- 0,5 %
Measuring force	spring pressure	spring pressure
Measuring wheel	plastic	plastic
Housing	polystyrol	polystyrol
Colour	black / white	black / white
Weight	approx. 0,5 kg	approx. 0,5 kg

Technical data	MESSBOI 30*
Part No.	85001000
Winding good Ø	1-30 mm
L x W x H	approx. 130 x 130 x 320 mm
Counter with reset key	9999,99 m
Measuring accuracy	+ / - 2 %
Measuring wheel	aluminum
Housing	aluminum diecasting
Hand grip	slip-resistant rubber
Colour	RAL 7005 mouse grey

* MESSBOI 10 MID (Measuring Instrument Directive) / Conformity assessment regarding measuring accuracy III (formerly first calibration) for coated round material issued by German calibration authority for a period of 2 years. Valid for all EU / EEA member states. Only approved for useage in direct sales!

* MESSBOI 30 is a discontinued model.

Indoor use only. Fig. may differ from original. Technical modifications reserved. Status 01/2020



Fig. 11: MESSBOI 10



Fig. 12: MESSBOI 30